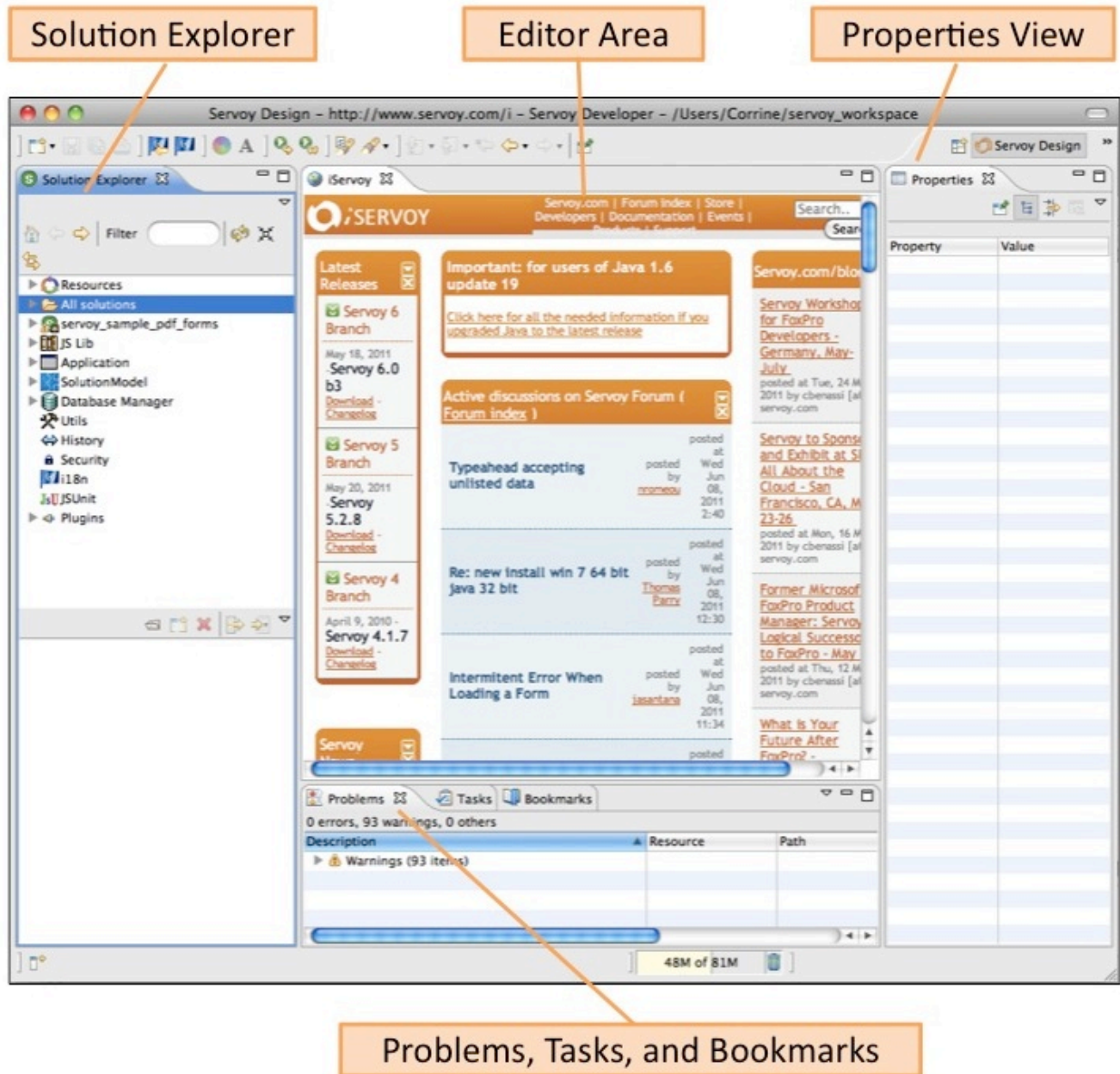


The Servoy Design Perspective

The Servoy Design default perspective contains the following parts:

- The Solution Explorer on the left
- The Editor area in the middle
- The Properties views on the right
- The Problems, Tasks, and Bookmarks views at the bottom.



These are described in further detail below.

- The Solution Explorer
- The Editor Area
- The Properties View
- Problems, Tasks, and Bookmarks
- Activating Other Views

Note: When you open Servoy (after closing the Welcome window), you will see an iServoy view in the Editor area. This view shows links to online Servoy resources and headlines, including the online forum, blog, new releases, and events. When you close and reopen Servoy, the perspective will load with the last set of editors that were active or loaded before closing.

The Solution Explorer

The Solution Explorer view is a hierarchal tree view of all the objects available in Servoy Developer. It is central to the Servoy development environment; everything you can do in Developer can be found in the Solution Explorer.

The Solution Explorer has two parts, the tree of objects (appears on top) and a contextual list (appears below). Depending on what is selected in the tree view, different objects will appear in the list view.

The following nodes in the Solution Explorer are of note:

- **Resources** – Within the Resources project are the list of database servers, styles, security options, i18n files, and templates available to the user within the current workspace.
- **All solutions** – Lists the Servoy project solutions in the current workspace. A solution can be activated from this list for development by right-clicking on the solution name and selecting **Activate Solution**.
- **The Active Solution** – Only one solution can be active at a time, and it is shown as a node in Solution Explorer. You can then expand the solution's node to reveal its contents---globals, forms, relations, valuelists, media, and modules. Further information about each item, when selected, will be displayed on the lower half of the Solution explorer.
- **JS Lib** – The JS Lib node contains a list of preformatted scripts available for use in Servoy.
- **Plugins** – This node allows access to user-installed plugins and extensions.

Users can open and work with any resource from the Solution explorer by selecting the resource and accessing the context menu. In addition, the following toolbar at the top of Solution Explorer provides navigational functions:



1. **TheHome** button – Resets the Solution Explorer view to show all the nodes available; the degree to which the trees/branches are displayed depend on the previous Home display.
2. **Back** and **Forward** buttons – The Forward button limits the Solution Explorer list to the contents of the selected node; for example, selecting Database Servers and clicking on the Forward button displays the list of Database Servers. Selecting Back shows the previous list, in this case, the entire set of resources in Solution Explorer.
3. **Filter** – is used to quickly show only items in the workspace containing the text entered in the filter.
4. **Refresh** – Shows the default trees of the Solution explorer view. When the Refresh button is selected while viewing a specific node's contents, the view is reset to the list with all trees collapsed.
5. **Collapse tree** – Collapses the current view to the first level nodes only.
6. ***Link with Editor*** – Highlights the selected item in an active editor.

The Editor Area

Items opened from the Solution Explorer will open in an appropriate editor in the main Editor Area. For example, users can select a form to open in either a Form Editor (a graphical view of the form) or a Script Editor (a text editor). Media items will open using a supported media viewer (Servoy supports image files, and you can assign other applications to open other file types via the Preferences menu). The following editors /viewers are provided by Servoy:

- Form Editor
- Script Editor
- Valuelist Editor
- Table Editor
- Relation Editor
- Database Editor
- Stylesheet Editor
- Security Editor
- i18n Editor
- Media Viewer

Most of these editors are straightforward; special features for the [Form](#), [Script](#), [Stylesheet](#), [Security](#), [Database](#), and [i18n](#) editors are described in further detail as separate chapters or addressed in the [Programming Guide](#).

The Properties View

The properties view shows context-specific information about a selected item in an Editor window. It is often used to assign JavaScript actions and object properties such as size and color to a form item.

Once a property item is modified or set, this property is saved with no further action required.

Problems, Tasks, and Bookmarks

The views underneath the Editor area include Problems, Tasks, and Bookmarks.

- **Problems** show warnings for items that are automatically highlighted based on Preferences set.
- **Tasks** list automatically or manually generated TODO items marked during development.
- **Bookmarks** are added to a line of script via the menu item, **Edit>Add Bookmark**. They are then listed in order of appearance in the Bookmarks view.

When activated, the **Search Results** view will show as a tab underneath the Editor area.

Note: To limit the Problems listed to the current solution, click on the inverted triangle at the top right of the Problems view and select **Configure Contents**. Check the **Servoy Active Solution filter**. This process only needs to be set once after Servoy installation, and will apply to all solutions from then on.

Tip: Additional Task tags can be customized and/or added via the Preferences menu, under the Javascript node.

Activating Other Views

Other views are available via the menu item **Window>Show View**. Newly activated views are typically shown on the right panel (as a tab next to Properties), but users can drag the tab to any desired location in the perspective. Once a view is active, it will remain in the perspective even when Servoy is closed and reopened. The default Servoy Design Perspective can be reset at any time using **Window>Reset Perspective**, provided the modified perspective was not saved as the default Servoy Design Perspective.

Commonly used Eclipse views include the Project Explorer and Navigator. For more information, visit the Help menu.