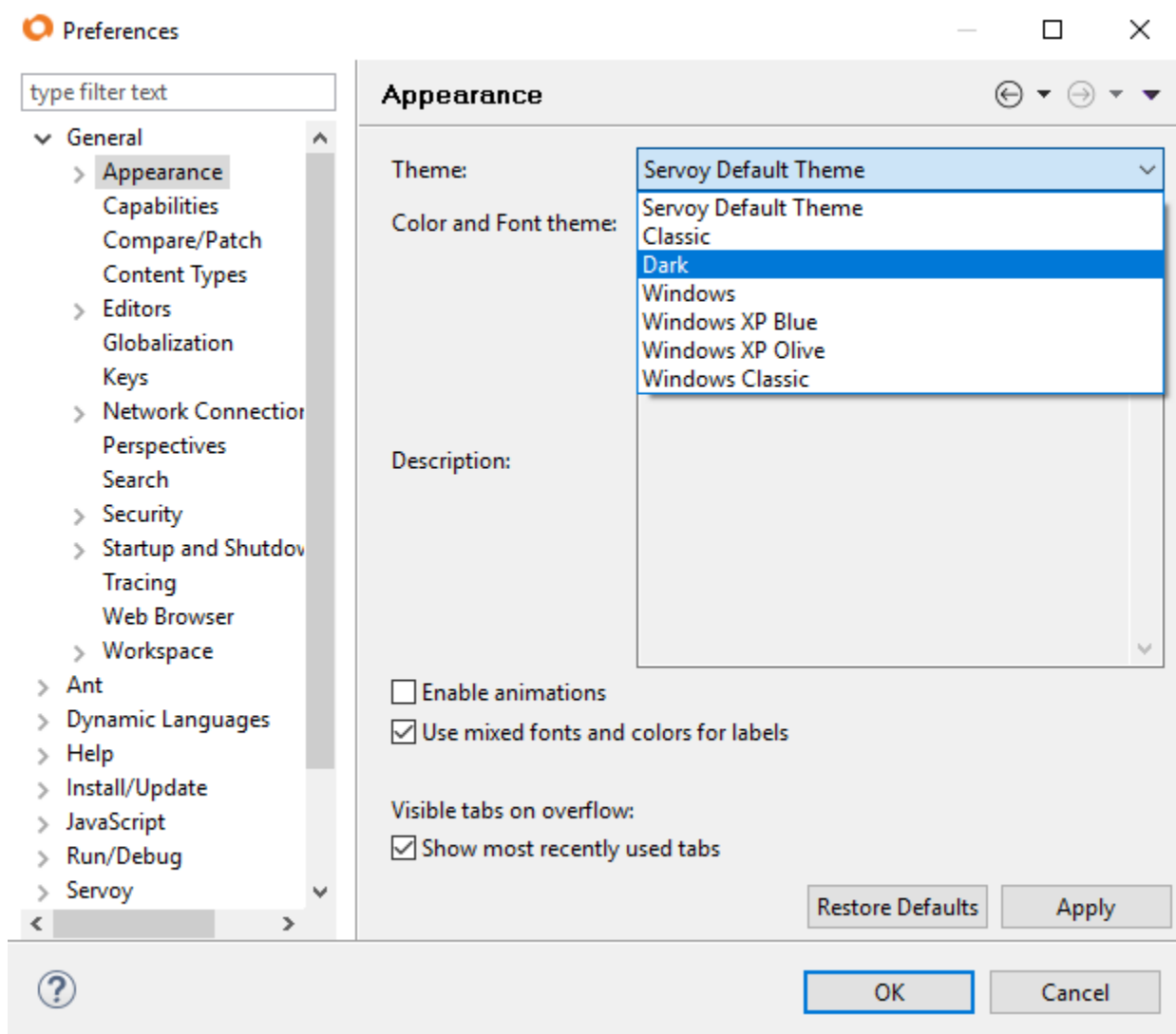


Developer Configuration and Themes

Starting with Servoy 8.2 it is possible to switch themes with special dark icons support:

Go to *Window -> Preferences* menu, then under *General*, on the *Appearance* page select the new theme, and click *Apply*.



Dark Theme Configurations

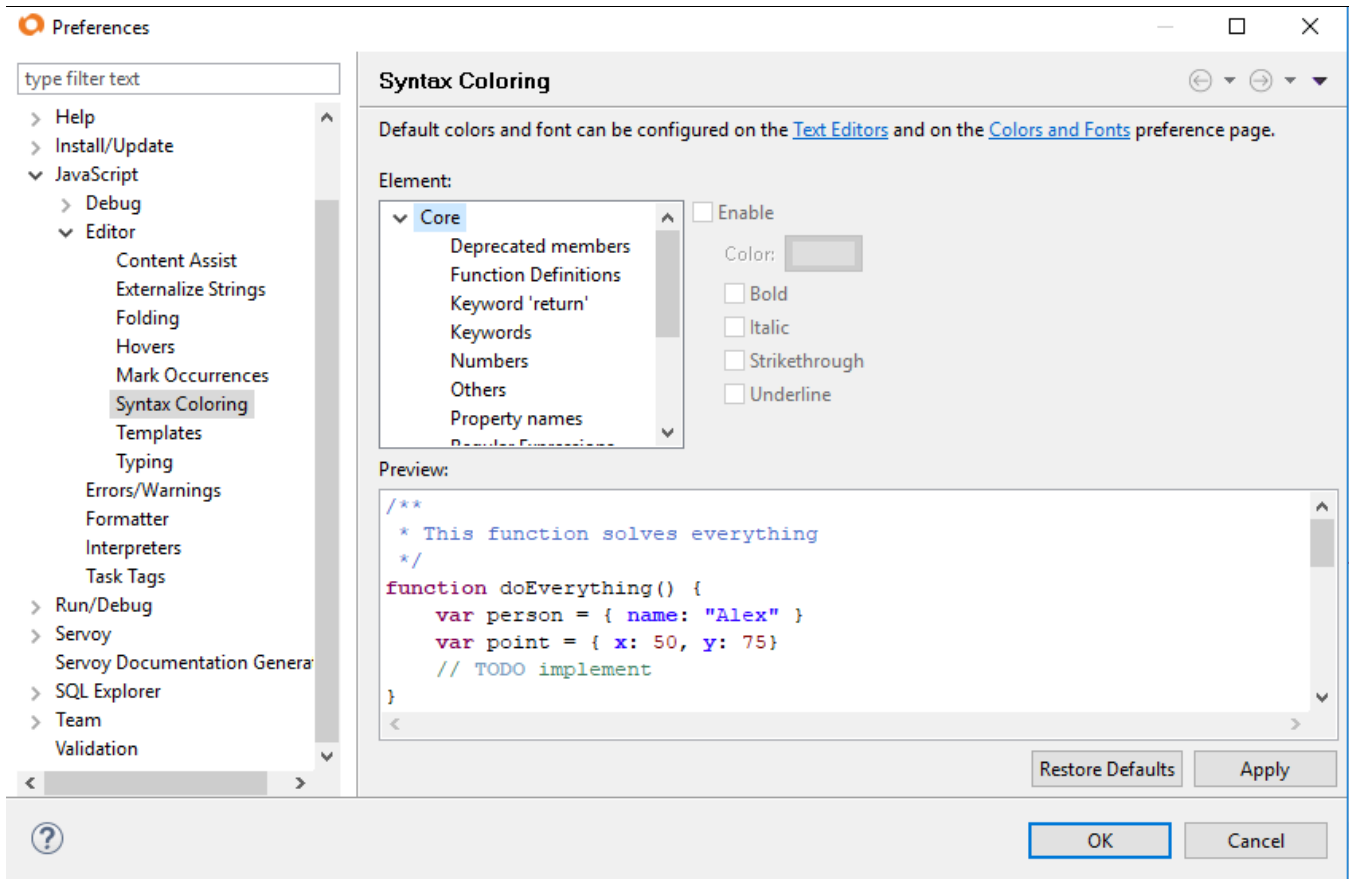
In case a dark theme is selected, it is necessary to:

1. configure the script editor with the dark theme
2. set a preference to use the dark theme icons.

Since the script editor colors do not change automatically when switching to the dark theme, the script editor colors can be changed directly on the **preferences page** or by **importing a preferences file**:

1A. Syntax Coloring of the Script Editor Preferences

On the page below you can pick the preferred colors for the script editor:



1B. Default Dark Theme Preferences for the Script Editor

A default preferences file is available to make the code readable on a dark background.

Backup Preferences

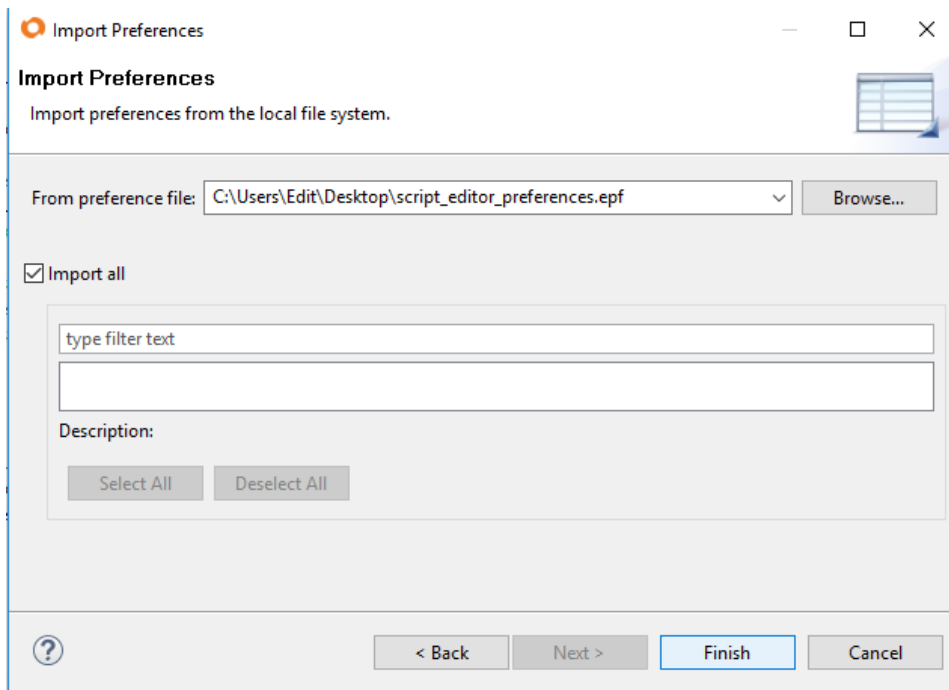
Before importing the script editor preferences it is a good idea to first backup your preferences to be able to restore them later.

In order to backup, go to **File -> Export**, and from **General** select **Preferences**. In the next screen select which preferences to export, choose a file name and location and click **Finish**.

To **import** the script editor syntax coloring preferences:

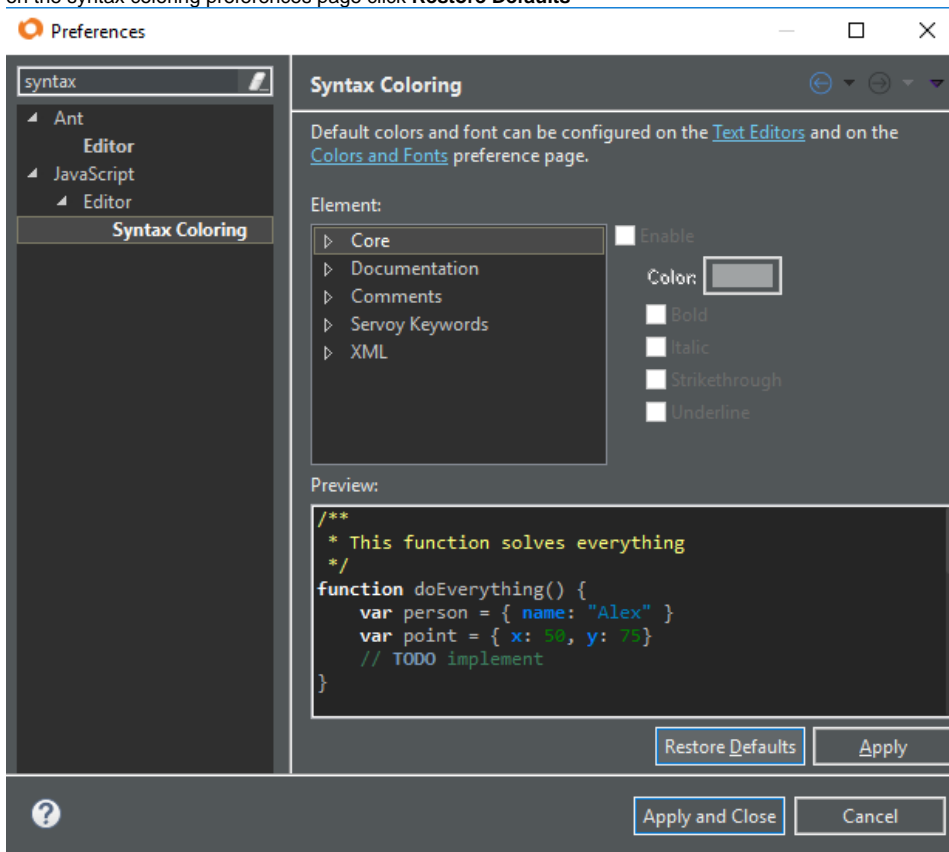
1. download the preferences file [script_editor_preferences.epf](#)
2. go to **File-> Import** and under **General** select **Preferences**

- On the import page select the downloaded preferences file, make sure **Import all** is checked and click **Finish**.



To restore the syntax editor coloring:

- on the syntax coloring preferences page click **Restore Defaults**



- import the [default.epf](#) preferences file to restore content assist preferences

2. The Dark theme icons Preference

Next, go to the Servoy Preferences page to set *"Use dark theme icons"*.

Please note that a restart is required after setting this preference.

Preferences

type filter text

- General
 - Appearance
 - Capabilities
 - Compare/Patch
 - Content Types
 - Editors
 - Globalization
 - Keys
 - Network Connections
 - Perspectives
 - Search
 - Security
 - Startup and Shutdown
 - Tracing
 - Web Browser
 - Workspace
- Ant
- Dynamic Languages
- Help
- Install/Update
- JavaScript
- Run/Debug
- Servoy**
 - Servoy Documentation Ger
- SQL Explorer
- Team
- Validation

Servoy

Servoy Preferences

Servoy Design Perspective Options

- Show Form Editing Toolbars inside Form Editor Show all
- Close Editors at shutdown
- Open Solution's main Form in Form Editor on Solution activation

Wizard options

- Show table columns
 - in alphabetic order (key columns first)
 - in database defined order

Table Creation Settings

Default Primary Key Sequence Type

Servoy Sequence

Form Properties

- Set default navigator on new forms

Encapsulation Properties

Public, Hide All

Appearance Options

- Use dark theme icons (restart required)

Launcher settings

Maximum time to wait for a solution to load in (non-mobile) jsunit test client: 300 sec.

Restore Defaults Apply

OK Cancel