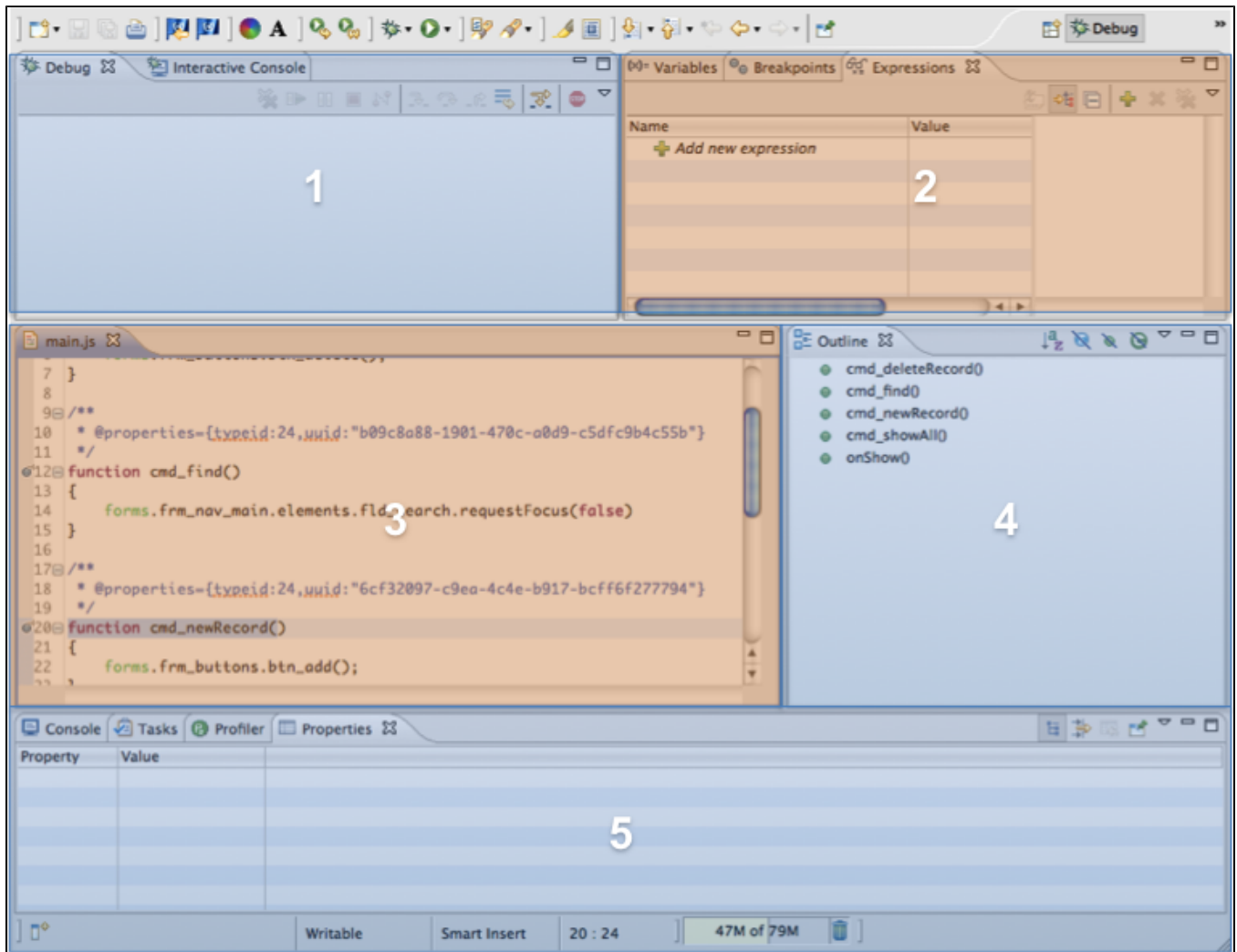


# Parts of the Debug Perspective

The Debug perspective contains the following views, divided into five main areas, described below from left to right and top to bottom.



## 1. Debug And Interactive Console

- The Debug view stack of methods being called while the client is running. Selecting an item in the view highlights the respective line in the Script editor view.
- Developers use the Interactive Console to interact with the client at runtime (for example, by inputting values to variables) at the method level.

**Note:** In Eclipse, you can also open the Command Console view to interact with the client. The command console links to the specific client being run and evaluates code on top level within solution (as opposed to the Interactive Console, which evaluates on a line-by-line level). When two clients are active, e.g. the Smart Client and Web Client, the command console allows you switch between active clients.

## 2. Variables, Breakpoints, And Expressions

- The Variables view shows a list of variables and their values active during debugging.
- The Breakpoints view shows a list of the breakpoints along with a toolbar that can be used to specify options for breakpoints. (Breakpoints are described in greater detail in the following section.)
- The Expressions view allows you to watch the values being output for a specified expression (to add an expression to the watch list, highlight it in Script editor and use the **Watch** command in the context menu). This view will also highlight errors caused by undefined expressions.

## 3. Editors


- Any editors (e.g. form and script editors) that were open in the Servoy Design perspective are shown in this area.
- During active debugging, the context menu provides the following additional items in addition to the normal script editor set: Display, Inspect, and Watch.
  - **Display** shows a simple output of the value of the selected object
  - **Inspect** shows any secondary structures that are included within a selected object.
  - **Watch** adds a selected expression to the watch list in the Expressions view.


## 4. Outline


- The outline view shows the list of elements found in the active editor view.

## 5. Console And Profiler

- These views provide additional information during debugging. The console shows data being output to the log during debugging.

- 
- When enabled (using the **Start Profiling** button (see below); at the top right of the view), the Profiler shows every method being fired, how many times it is fired, the time of execution, and the total execution time as the client runs.  

  - Other views that were opened in the Servoy Design perspective, such as TODO and Results, may also be found here.

 Note: If a desired view is not visible in your Debug perspective, you can open it using the main menu item **Window > Show View** (Popular debug views are shown in this menu; clicking **Other** opens a browser that allows you to search all available views).

 Note: Many of these views have context-specific toolbars located at the top right of the view that allow easy access to commonly used functions within the view. Users can also access view options by clicking on the inverted triangle found at the top right corner of the view.