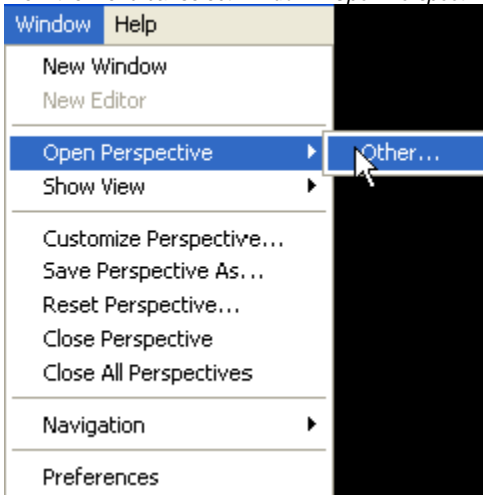


Connecting to a SVN Repository

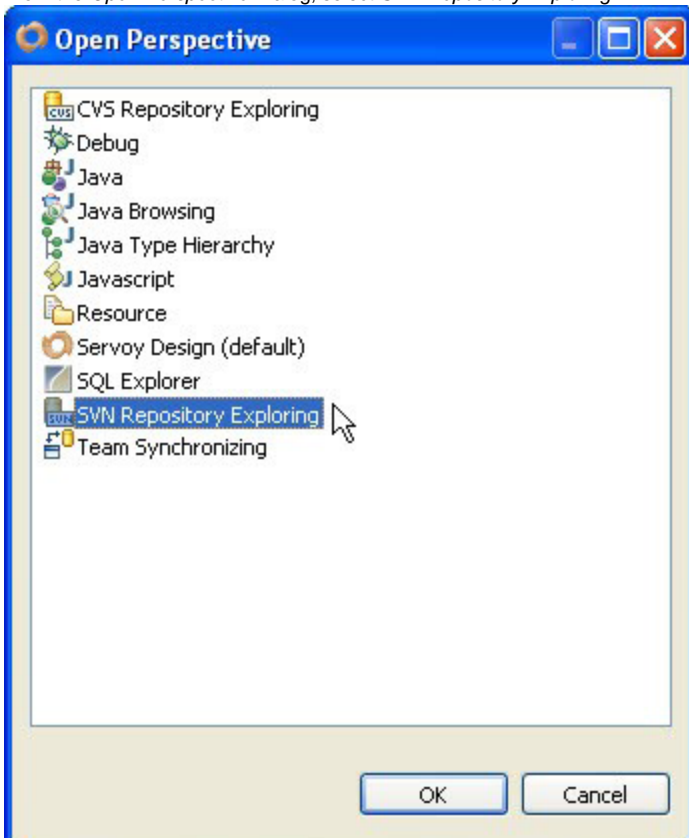
To use an SVN Team Provider, you must have a repository already setup for use (on an SVN server). Please see [\(add link here\)](#) for more details about setting up an SVN Server and a repository.

Connecting to an Existing Repository

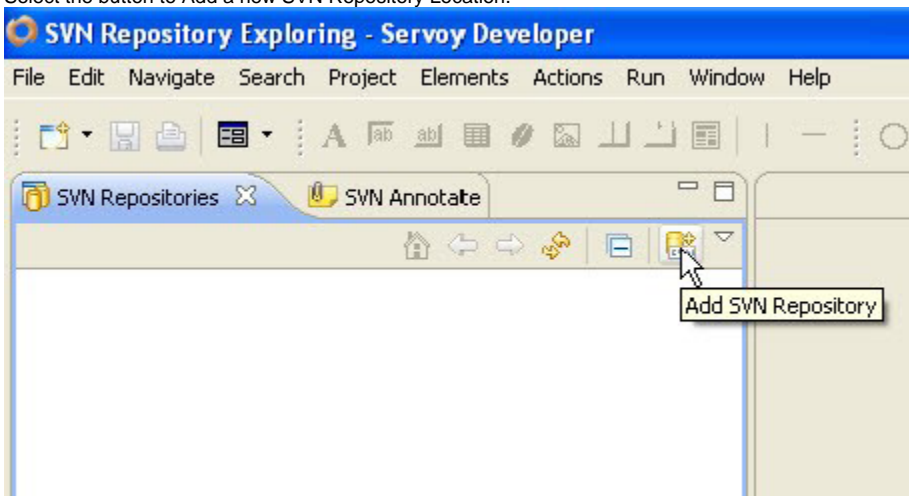
1. From the menu bar select *Window > Open Perspective > Other*



2. From the *Open Perspective* Dialog, select *SVN Repository Exploring*



3. Select the button to Add a new SVN Repository Location.



This only creates a link to the repository, it does not create the repository itself.

4. Enter the URL for your repository and click finish



5. Once you have connected, you may brows the repository structure

