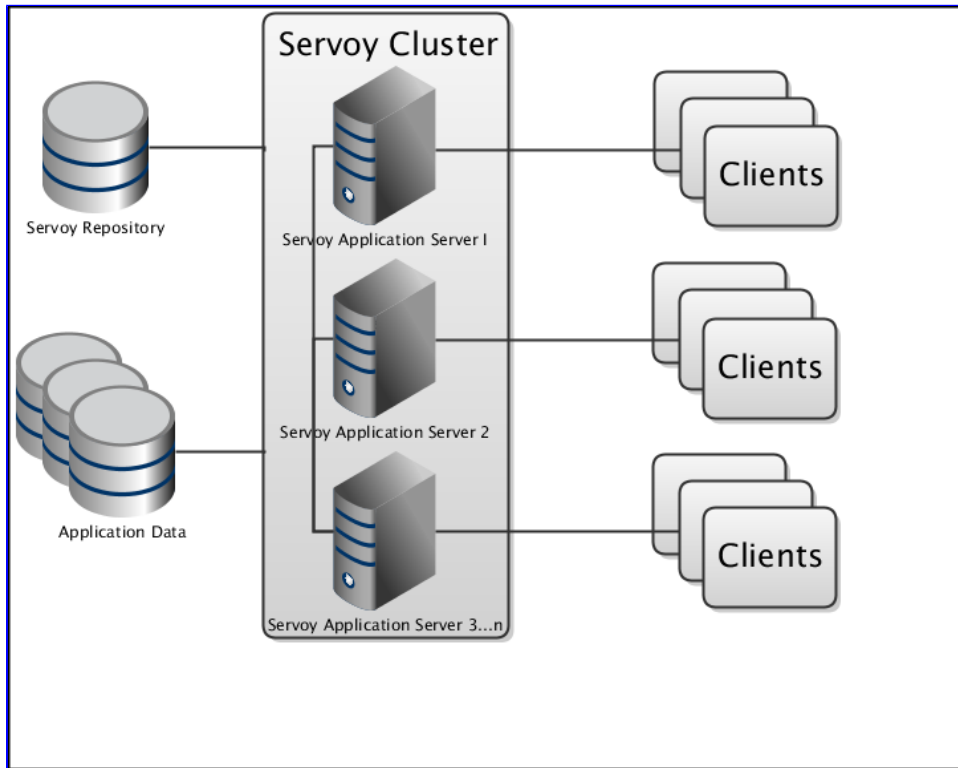


# Clustering servers

[Servoy Cluster](#) allows multiple Servoy Application Servers instances to be clustered together and act as 1 virtual Servoy Application Server.



Clustered Servoy Application Servers share the same [Servoy Repository](#). This means that all Servoy Application Servers in the cluster share the same version of the solutions available. Servoy Cluster makes all Servoy Application Servers in the cluster remain in sync when importing (a new version of) a solution. Servoy's [Databroadcasting](#) mechanism also operates throughout the entire cluster.

Servoy Cluster is based on [Terracotta](#), the world's most powerful and widely-adopted open source platform for Java scalability and availability.

This chapter describes the **set up of a cluster** in [Cluster installation](#).

A Servoy Cluster is best set up in combination with a [Load Balancer](#). Adding a Load Balancer and a HTTP Server in front of the Servoy Cluster will provide the following benefits:

- Using an HTTP Server in front of the cluster provides Clients a **single point of entry**, hiding the individual Servoy Application Server instances from view for Clients.
- Using a Load Balancer in front of the cluster allows for the **automatic distribution of connecting clients** over the available Servoy Application Servers.

For a step by step guide on setting up Apache HTTP Server as single point of entry and Load Balancer, see [Load Balancing servers](#).